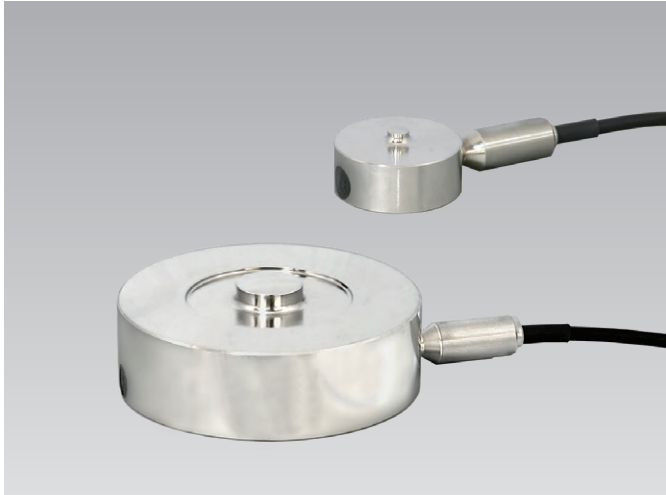


# LOAD CELLS

## CLR-NAH Compression Load Cell 500N~200kN

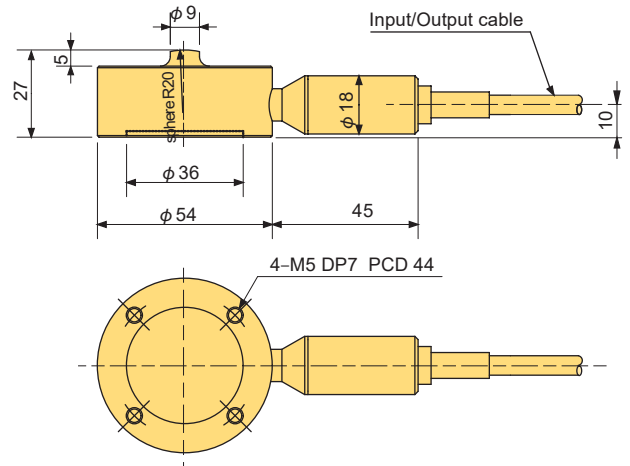


The CLR-NAH compression load cell can be used at high temperatures. The inert gas-filled and hermetically sealed structure offers stable measurement.

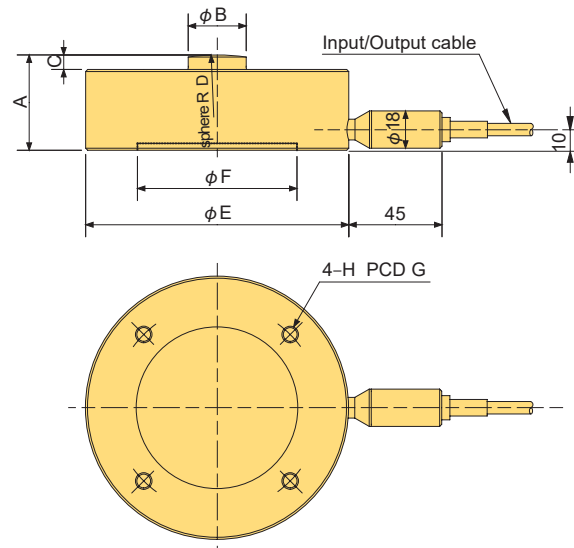
Protection ratings: IP67 equivalent

**High temperature upto 160°C**  
**Inert gas hermetically sealed**

CLR-500NAH~ 20KNAH



CLR-50~ 200KNAH



### ■ FITTING ACCESSORY

TYPE	Spherical Cap FA	Mounting Flange FB	Slide Support FC
CLR-500NAH CLR-1KNAH~ 20KNAH	FA-20	FB-2-44	FC-2-20
CLR-50KNAH	FA-60	FB-5-82	FC-5-60
CLR-100KNAH	FA-80	FB-10-90	FC-20-80
CLR-200KNAH	FA-100	FB-20-100	FC-20-100

Refer to pages 35~38 for load cell fitting accessories.

### ■ DIMENSIONS

TYPE	A	φB	C	D	φE	φF	G	H
CLR-50KNAH	31	18	3	60	102	67	82	M8 DP10
CLR-100KNAH	36	22	5	80	117	71	90	M8 DP10
CLR-200KNAH	46	28	7	100	127	77	100	M8 DP10

### ■ SPECIFICATIONS

TYPE	CLR-500NAH	CLR-1KNAH	CLR-2KNAH	CLR-5KNAH	CLR-10KNAH	CLR-20KNAH	CLR-50KNAH	CLR-100KNAH	CLR-200KNAH
Capacity	500N	1kN	2kN	5kN	10kN	20kN	50kN	100kN	200kN
Rated Output	2mV/V (4000×10 <sup>-6</sup> strain) ±25%								
Non-linearity	0.5%RO								
Hysteresis	0.5%RO								
Natural frequency	6.1kHz	8.9kHz	13kHz	19kHz	24kHz	28kHz	13kHz	13kHz	13kHz
Temperature effect on zero	0.005%RO/°C								
Temperature effect on span	0.01%/°C								
Compensated temperature range	-10 ~ +160°C								
Allowable temperature range	-10 ~ +160°C								
Over load	150%								
Input/Output resistance	350Ω±2%								
Recommended exciting voltage	10V or less								
Allowable exciting voltage	20V								
Zero balance	±5000×10 <sup>-6</sup> strain or less								
Weight	0.3kg						1.4kg	2.2kg	3.6kg

Input/Output cable : φ6mm 0.3mm<sup>2</sup> 4-core shielded fluorocarbon resin cable 5m